

Test Equipment Solutions Datasheet

Test Equipment Solutions Ltd specialise in the second user sale, rental and distribution of quality test & measurement (T&M) equipment. We stock all major equipment types such as spectrum analyzers, signal generators, oscilloscopes, power meters, logic analysers etc from all the major suppliers such as Agilent, Tektronix, Anritsu and Rohde & Schwarz.

We are focused at the professional end of the marketplace, primarily working with customers for whom high performance, quality and service are key, whilst realising the cost savings that second user equipment offers. As such, we fully test & refurbish equipment in our in-house, traceable Lab. Items are supplied with manuals, accessories and typically a full no-quibble 2 year warranty. Our staff have extensive backgrounds in T&M, totalling over 150 years of combined experience, which enables us to deliver industry-leading service and support. We endeavour to be customer focused in every way right down to the detail, such as offering free delivery on sales, covering the cost of warranty returns BOTH ways (plus supplying a loan unit, if available) and supplying a free business tool with every order.

As well as the headline benefit of cost saving, second user offers shorter lead times, higher reliability and multivendor solutions. Rental, of course, is ideal for shorter term needs and offers fast delivery, flexibility, try-before-you-buy, zero capital expenditure, lower risk and off balance sheet accounting. Both second user and rental improve the key business measure of Return On Capital Employed.

We are based near Heathrow Airport in the UK from where we supply test equipment worldwide. Our facility incorporates Sales, Support, Admin, Logistics and our own in-house Lab.

All products supplied by Test Equipment Solutions include:

- No-quibble parts & labour warranty (we provide transport for UK mainland addresses).
- Free loan equipment during warranty repair, if available.
- Full electrical, mechanical and safety refurbishment in our in-house Lab.
- Certificate of Conformance (calibration available on request).
- Manuals and accessories required for normal operation.
- Free insured delivery to your UK mainland address (sales).
- Support from our team of seasoned Test & Measurement engineers.
- ISO9001 quality assurance.

Test equipment Solutions Ltd
Unit 8 Elder Way
Waterside Drive
Langley
Berkshire
SL3 6EP

T: +44 (0)1753 596000
F: +44 (0)1753 596001

Email: info@TestEquipmentHQ.com
Web: www.TestEquipmentHQ.com



Line Impedance Stabilization Network HM6050-2



HM6050-2

- Measurement of Line-conducted Interference within the Range from 9kHz...30MHz (CISPR 16)
- Switchable Transient Limiter
- Artificial Hand Connector

Technical Specifications at 23°C ±2°C

| | |
|----------------------------|--|
| Frequency Range: | 9kHz...30MHz |
| Impedance Characteristics: | Z = 50Ω (50μH + 5Ω), Error <20% under terms of VDE 876T1 |
| Max. Current: | 16A |
| Line Voltage/Frequency: | 230V/50...60Hz, CAT II |
| Artificial Hand: | 220pF + 511Ω |
| PE (switchable): | 50μH 50Ω |

Transient Limiter

| | |
|--------------------|--------------------|
| Frequency Range: | 150kHz...30MHz |
| Transmission Loss: | 10dB (+1.5/-0.5dB) |

Connectors

| | |
|------------------------------|---|
| Measurement Output: | 50Ω BNC |
| Power Supply Socket for DUT: | Standard German (UK, US) electrical cases |
| Artificial Hand: | 4mm banana socket |
| Power Cable: | fixed |

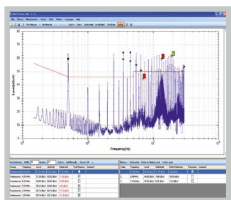
Miscellaneous

| | |
|------------------------|---|
| Operating Temperature: | 10...40°C |
| Power Supply: | HM6050-2D (DE Version) 230V ±10%, 50...60Hz HM6050-2K (UK Version) 230V ±10%, 50...60Hz HM6050-2S (US Version) 115V ±10%, 50...60Hz |
| Safety Class: | Safety class I (IEC1010-1/VDE 0411) |
| Dimensions and Weight: | 285 x 125 x 380mm (W x H x D), approx. 6kg |

HM6050-2K
(UK Version, 230V)
HM6050-2S
(US Version, 115V)



Measurement of Line-conducted Interference: Fail



Measurement of Line-conducted Interference: Pass

